

THE SPYGLASS

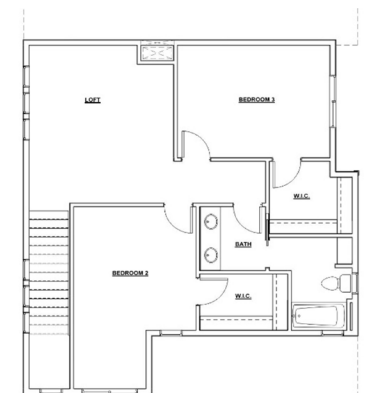
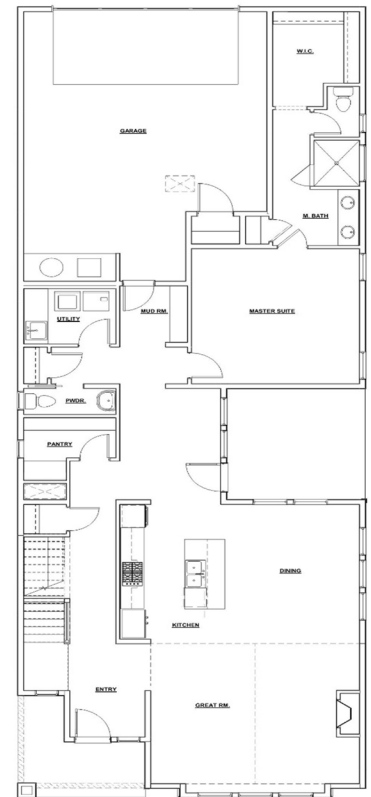


Welcome to the Spyglass! The Spyglass lives large with a vaulted great room beneath a wall of glass, a main level master suite, a mega-sized pantry, and two upper level guest suites complete with oversized walk-in closets! In addition to three bedrooms is a bonus/loft, and a spacious garage with one bay measuring 26' deep for full size vehicles!

A sheltered courtyard is secluded for private outdoor living, and a snug reading nook is tucked under the stairs, complete with reading light.

Designer finishes of Boise Building Company shine in this new and exciting plan!

- 2535 Sq Ft
- 3 Bedrooms plus Loft/Bonus
- 2.5 Baths
- 2 Car Garage



EVA HOOPES
mobile: 208.284.7732
ehoopes@groupone.com

Group One

Sotheby's
INTERNATIONAL REALTY