

THE DORAL



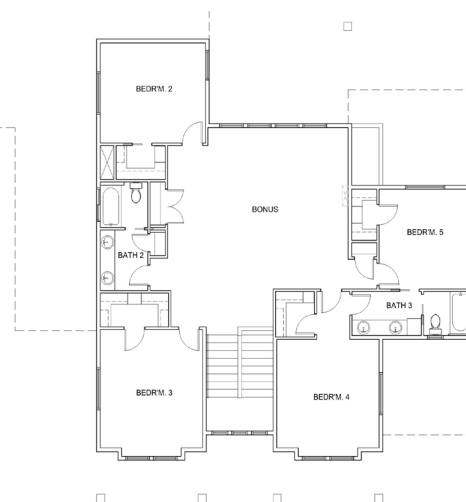
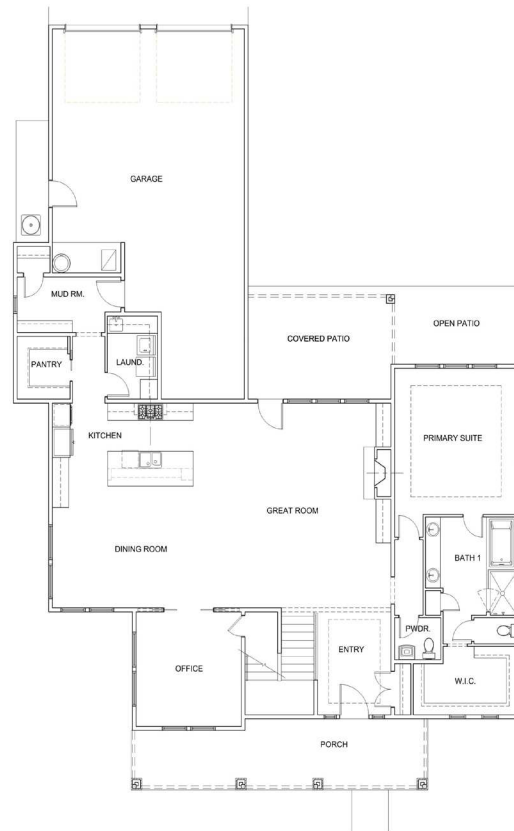
Introducing The Doral, a new floorplan from Boise Building Company!

Imbued with the qualities of timeless traditional architecture, a welcoming front porch and elegant entry introduce the residence. Within, homeowners will be treated with a custom designed kitchen, slabs of granite or quartz, and a 4 piece Bosch appliance package!

Showcased within 3974 feet are five bedrooms (all with walk-in closets), 3.5 baths, a supersized bonus room, plus a light-filled main level office.

Busy families will appreciate the hardworking mudroom, walk-in pantry and utility room, all conveniently located off of the kitchen.

In addition there is a 3 car garage plus multiple outdoor patios/porches designed for large scale entertaining!



Details

3974 Square Feet

5 Bedrooms Plus Office and Bonus

3.5 Baths

Triple Garage



BOISE BUILDING
COMPANY