

THE PRESTWICK



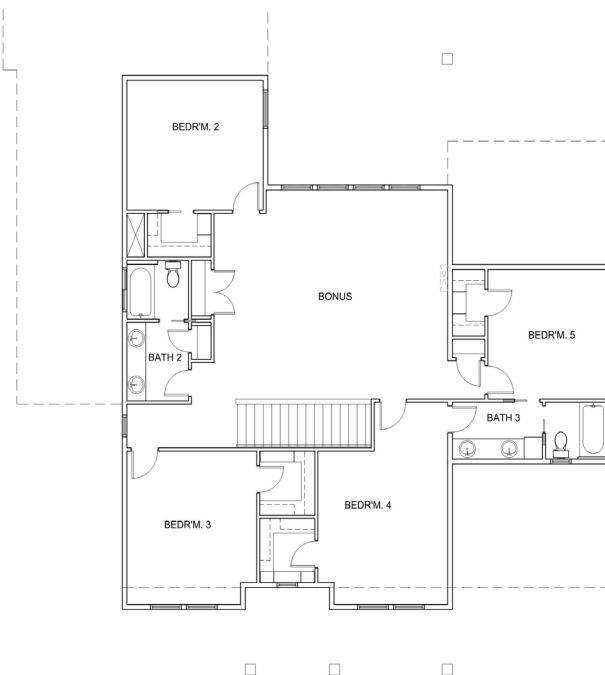
Introducing The Prestwick, a new floorplan from Boise Building Company!

Imbued with the qualities of timeless traditional architecture, a welcoming front porch and elegant entry introduce the residence. Within, homeowners will be treated with a gourmet kitchen, slabs of granite or quartz, and a 4 piece Bosch appliance package!

Showcased within 3810 feet are five bedrooms (all with walk-in closets), 3.5 baths, a supersized bonus room, a main level office, plus a multi-purpose sunroom.

Loaded with storage, this expansive plan is custom designed for a busy lifestyle!

In addition there is a 4 car garage plus an oversized covered patio!



Details

3810 Square Feet

5 Bedrooms Plus Office, Bonus and Sunroom

3.5 Baths

Triple Garage



BOISE BUILDING
COMPANY