

THE OLYMPIC



FRONT ELEVATION



Welcome to The Olympic with 3449 square feet of living perfection! The plan emphasizes 10' main level ceilings and walls of glass for abundant natural light!

On the main level is a great room ensemble with family room, a 14' dining area plus there is guest bedroom and full bath, and luxurious master suite with walk-in shower, dual vanities and separate soaker tub! On display in the chef's kitchen is gorgeous slabs of quartz and custom cabinetry, a walk-in pantry, and 4 piece Bosch appliance package!

Upstairs is an oversized media room. Four additional bedrooms plus two full baths complete the upper level.

Curb appeal abounds with the craftsman inspired elevation!

Details

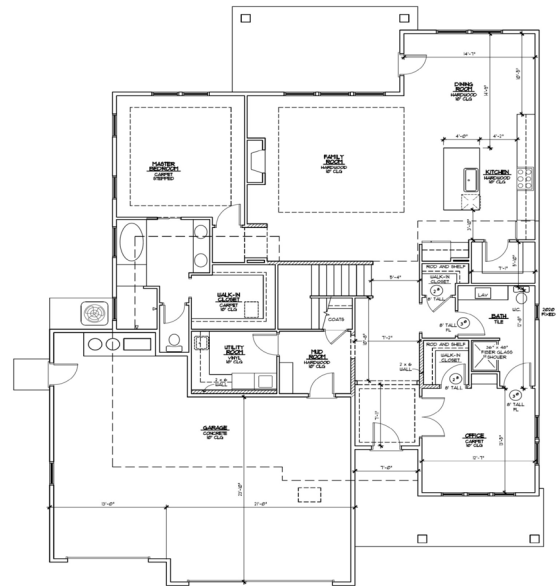
3449 Square Feet

5 Bedrooms + Guest Bed/Office + Bonus

4 Baths

Triple Garage

*Note - Some photos are from prior build and plan has changed significantly.



BOISE BUILDING
COMPANY