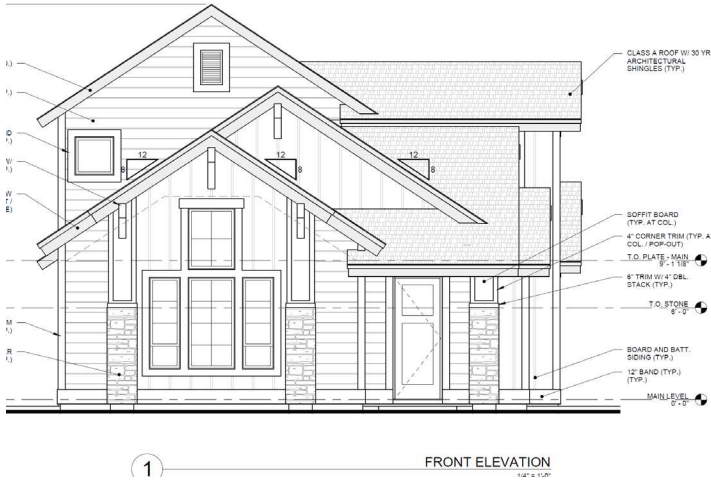


# THE SHINNECOCK



**W**elcome to the Shinnecock! The Shinnecock is full of style! The entire great room has a 13' tall flat topped vault, and the gourmet kitchen has abundant custom cabinetry, slab granite or quartz surfaces, and a 4 piece Bosch appliance package! In addition, there is a dedicated spacious dining area with abundant windows!

The plan includes a main level master suite, plus an additional main level guest suite. On the upper level is a bonus room and private guest quarters.

A sheltered courtyard is secluded for private outdoor living!

Designer finishes of Boise Building Company shine in this new and exciting plan!

2311 Sq Ft

3 Bedrooms plus Loft/Bonus (Main level master plus one guest room on main level)

3 Baths

2 Car Garage

