

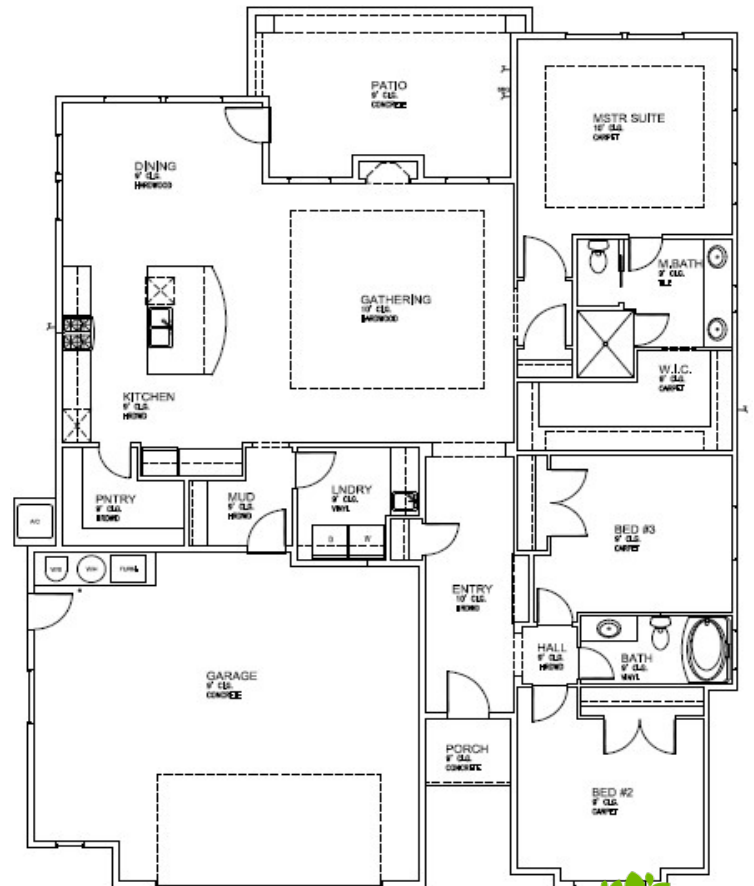
THE TURNBERRY



boise building.co

Welcome to the Turnberry! The living is easy in this graceful design! Designer elements are showcased in the custom kitchen with a Costco sized pantry! From slabs of gorgeous granite, to fine tile, gorgeous cabinetry and miles of gleaming wood floors, Boise Building Company spares no expense in pampering new owners! A 4-piece Bosch stainless steel appliance package is included in every home. Stylish lighting and upgraded trim adds luxurious, show-stopping detail in the family room!

All primary living spaces are conveniently laid out on a single level, encompassing 3 bedrooms and 2 baths. The expansive great room opens up to a covered patio, and abundant windows ensures the interior is enveloped in light and comfort. The guest rooms are privately located off of an elegant vestibule, and the master suite ensemble features coffered ceiling heights and a luxurious master bath with dual vanities a walk-in tiled shower, and huge walk-in closet! Completing the ensemble is an oversized 2-car garage w/ workshop space!



Details

2048 Square Feet

3 Bedrooms

2 Baths

Double Garage with Expanded Workshop Space



BOISE BUILDING
COMPANY